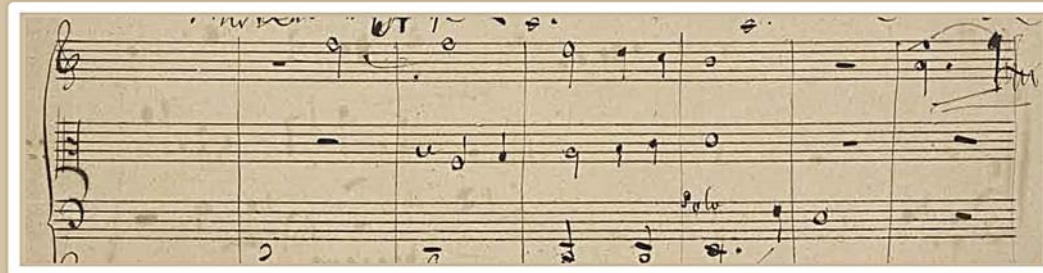


Homage To Mahler



earle b. weiss



Gustav Mohler

1. Satz.

Nicht zu schnell

Violin I

Violin II

Viola

Cello

Clavier

Mit dem Violoncello

Original Manuscript ca 1876

HOMAGE
MAHLER'S PIANO QUARTET IN A MINOR

A
piercing assault
suddenly
as from a deeply
ever-sense
pieces of wood, taut strings
colours weave
what dreams this embraced sentiment
overwhelms only,

so I close my eyes
now gone
shades of subtle innuendo
beyond there dwells
one overpowering humility
hidden amongst soaring elations,

I
shall not return
so sublime entwines
this theme
such this a place always sought yet few born,

my hands tremble outstretched
head softly bowed
delicate creativity embracing
a sweeping narcosis embrace that wisps
over all
with promises of yet will and must be
as concrete crumbles to its inevitable fate,

suddenly,
the universe of gods cease
what mortal have we.....so
endowed
to stumble upon our soul
subtle inner voices
hypnotizing that
human suffocation
blasphemy!

so,
this such dwells words must beyond
poets thee dwell no place, begone
there be one's mere embrace
so,

total submission
under unyielding demands
to those creative tones weave mysterious forces
imposing irrevocable senses of where
I belong,
Humbled,

Is only there...



Baldwin Hill Press
Aurora Art White
2018

No. _____

© Earle B. Weiss